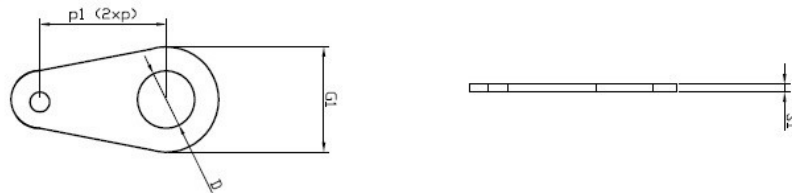
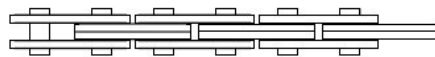


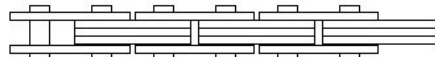
FINAL PLATE



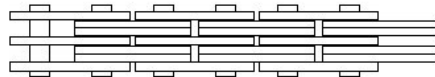
2X2



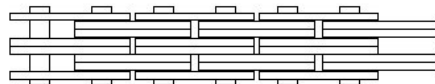
2X3



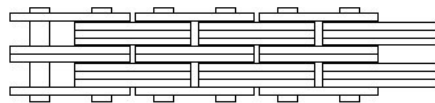
3X4



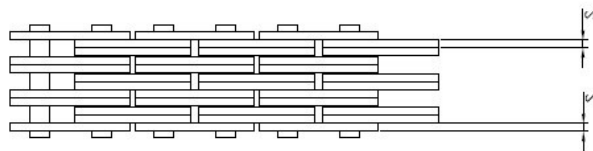
4X4



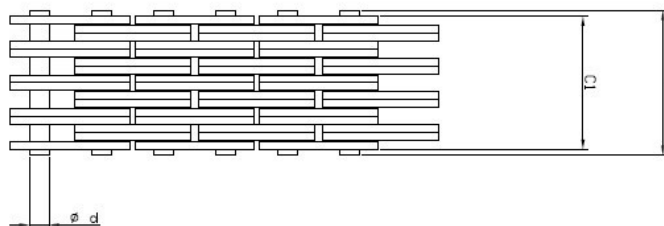
4X6



6X6



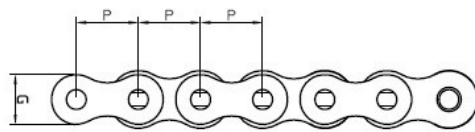
8X8



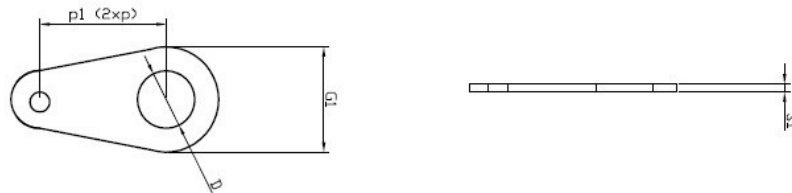
Ref. ANSI N°	AS Nord code	Pitch [mm]	Plate combination NOM	Chain lenght over 100 pitches [mm] (+/- 0,25%)	Plate width [mm] MAX	Plate height [mm] MAX	Size	Ø Pin diam. [mm] MAX	Final plate lenght [mm] MAX	Final plate hole diam. [mm] MAX	ISO606 Tensile strenght [kN]	Weight [kg/m]
		P			S	G	L	d	G1	D	FB	q
-	922	9.525	2x2	944,0	1,04	8,70	6,20	3,28	18,0	10,0	10,7	0,23
-	944	9.525	4x4	944,0	1,04	8,70	10,40	3,28	18,0	10,0	21,0	0,51
-	966	9.525	6x6	944,0	1,04	8,70	14,90	3,28	18,0	10,0	33,1	0,66
LL 0822	1222	12,700	2x2	1259,0	1,69	10,70	8,90	4,45	22,0	12,0	22,5	0,44
-	1234	12,700	3x4	1259,0	1,69	10,70	14,20	4,45	22,0	12,0	31,0	0,71
LL 0844	1244	12,700	4x4	1259,0	1,69	10,70	15,90	4,45	22,0	12,0	45,0	0,87
-	1256	12,700	5x6	1259,0	1,69	10,70	21,10	4,45	22,0	12,0	53,0	1,10
LL 0866	1266	12,700	6x6	1259,0	1,69	10,70	22,80	4,45	22,0	12,0	67,0	1,30
LL 0888	1288	12,700	8x8	1259,0	1,69	10,70	30,00	4,45	22,0	12,0	85,0	1,60
-	1522	15.875	2x2	1580,0	1,94	12,70	10,10	5,08	28,0	16,0	29,0	0,55
-	1523	15.875	2x3	1580,0	1,94	12,70	12,10	5,08	28,0	16,0	29,0	0,69
-	1534	15.875	3x4	1580,0	1,94	12,70	16,00	5,08	28,0	16,0	46,0	0,94
-	1544	15.875	4x4	1580,0	1,94	12,70	18,10	5,08	28,0	16,0	58,0	1,07
-	1545	15.875	4x5	1580,0	1,94	12,70	20,30	5,08	28,0	16,0	58,0	1,22
-	1556	15.875	5x6	1580,0	1,94	12,70	24,00	5,08	28,0	16,0	72,0	1,47
-	1566	15.875	6x6	1580,0	1,94	12,70	25,90	5,08	28,0	16,0	87,0	1,60
-	1567	15.875	6x7	1580,0	1,94	12,70	27,80	5,08	28,0	16,0	90,0	1,74
-	1578	15.875	7x8	1580,0	1,94	12,70	32,50	5,08	28,0	16,0	101,0	2,00
-	1588	15.875	8x8	1580,0	1,94	12,70	34,00	5,08	28,0	16,0	115,0	2,15
LL 1223	1923	19,050	2x3	1892,0	1,81	14,80	12,00	5,72	32,0	18,0	32,0	0,82
LL 1234	1934	19,050	3x4	1892,0	1,81	14,80	16,00	5,72	32,0	18,0	48,0	1,14
-	1944	19,050	4x4	1891,0	2,29	14,80	21,30	5,72	32,0	18,0	73,0	1,20
LL 1245	1945	19,050	4x5	1892,0	1,81	14,80	19,70	5,72	32,0	18,0	64,0	1,47
LL 1256	1956	19,050	5x6	1892,0	1,81	14,80	22,90	5,72	32,0	18,0	80,0	1,70
-	1966	19,050	6x6	1891,0	2,29	14,80	30,30	5,72	32,0	18,0	110,0	1,78
LL 1267	1967	19,050	6x7	1892,0	1,81	14,80	26,70	5,72	32,0	18,0	96,0	2,00
LL 1278	1978	19,050	7x8	1892,0	1,81	14,80	30,30	5,72	32,0	18,0	112,0	2,30
-	1988	19,050	8x8	1891,0	2,29	14,80	40,00	5,72	32,0	18,0	140,0	2,40
LL 1622	2522	25,400	2x2	2532,0	3,06	20,20	15,50	8,27	44,0	25,0	78,0	1,42
-	2523	25,400	2x3	2532,0	3,06	20,20	18,60	8,27	44,0	25,0	72,0	1,65
-	2534	25,400	3x4	2532,0	3,06	20,20	25,30	8,27	44,0	25,0	108,0	2,27
LL 1644	2544	25,400	4x4	2532,0	3,06	20,20	28,10	8,27	44,0	25,0	155,0	2,79
-	2545	25,400	4x5	2532,0	3,06	20,20	31,60	8,27	44,0	25,0	144,0	2,93
-	2556	25,400	5x6	2532,0	3,06	20,20	37,20	8,27	44,0	25,0	180,0	3,54
LL 1666	2566	25,400	6x6	2532,0	3,06	20,20	40,50	8,27	44,0	25,0	230,0	4,15
-	2567	25,400	6x7	2532,0	3,06	20,20	43,60	8,27	44,0	25,0	216,0	4,20
-	2578	25,400	7x8	2532,0	3,06	20,20	50,00	8,27	44,0	25,0	252,0	4,47
LL 1688	2588	25,400	8x8	2532,0	3,06	20,20	52,80	8,27	44,0	25,0	290,0	5,20
-	3144	31,750	4x4	3154,0	4,16	22,80	37,90	10,17	44,0	25,0	215,0	4,06
-	3166	31,750	6x6	3154,0	4,16	22,80	55,00	10,17	44,0	25,0	320,0	6,04
-	3188	31,750	8x8	3154,0	4,16	22,80	72,10	10,17	44,0	25,0	427,0	7,63
-	3844	38,100	4x4	3806,0	5,55	30,70	49,10	14,63	56,0	32,0	362,0	7,57
-	3866	38,100	6x6	3806,0	5,55	30,70	71,60	14,63	56,0	32,0	550,0	11,00
-	3888	38,100	8x8	3806,0	5,55	30,70	94,10	14,63	56,0	32,0	740,0	13,50
-	5044	50,800	4x4	5077,0	7,14	47,63	73,56	20,32	-	-	667,2	17,58
-	5066	50,800	6x6	5077,0	7,14	47,63	103,38	20,32	-	-	934,1	26,00
-	5088	50,800	8x8	5077,0	7,14	47,63	133,10	20,32	-	-	1245,0	34,32
-	7688	76,200	8x8	7617,0	7,14	73,03	160,02	34,67	-	-	1842,0	61,02
-	7610	76,200	10x10	7617,0	7,14	73,03	189,61	34,67	-	-	2342,0	74,41

Other sizes available on request.

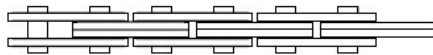
Final plates are available. Details on request.



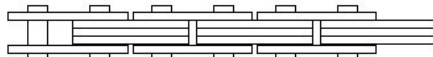
FINAL PLATE



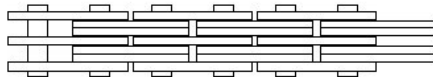
2X2



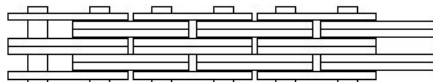
2X3



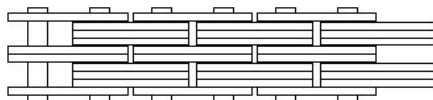
3X4



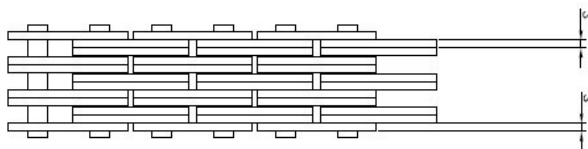
4X4



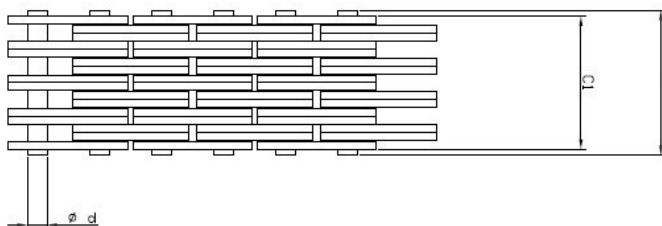
4X6



6X6



8X8





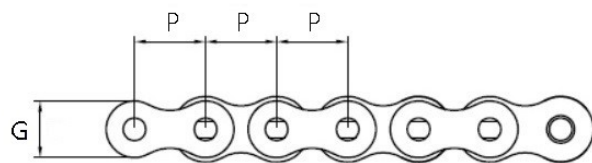
Chain Ref.	Technical Details
------------	-------------------

Ref. ANSI N°	AS Nord code	Pitch [mm]	Plate combination NOM	Chain lenght over 100 pitches [mm] (+/- 0,25%)	Plate width [mm] MAX	Plate height [mm] MAX	Size	Ø Pin diam. [mm] MAX	Final plate lenght [mm] MAX	Final plate hole diam. [mm] MAX	ISO606 Tensile strenght [kN]	Weight [kg/m]
--------------	--------------	---------------	--------------------------	------------------------------------------------------------	----------------------------	-----------------------------	------	----------------------------	--------------------------------------	------------------------------------------	---------------------------------------	------------------

LL Series

		P			S	G	L	d	G1	D	FB	q
LL 0822	CFLL0822	12,700	2x2	1259	1,69	10,7	8,9	4,45	22,0	12,0	21,0	0,44
LL 0844	CFLL0844	12,700	4x4	1259	1,69	10,7	15,9	4,45	22,0	12,0	42,0	0,87
LL 0866	CFLL0866	12,700	6x6	1259	1,69	10,7	22,8	4,45	22,0	12,0	64,0	1,30
LL 1022	CFLL1022	15.875	2x2	1577	1,55	12,8	8,9	5,08	-	-	22,7	0,47
LL 1044	CFLL1044	15.875	4x4	1577	1,55	12,8	15,6	5,08	-	-	45,4	0,92
LL 1066	CFLL1066	15.875	6x6	1577	1,55	12,8	22,2	5,08	-	-	68,1	1,36
LL 1222	CFLL1222	19,050	2x2	1892	1,81	14,8	10,0	5,72	-	-	32,0	0,62
LL 1244	CFLL1244	19,050	4x4	1892	1,81	14,8	17,8	5,72	-	-	64,0	1,21
LL 1266	CFLL1266	19,050	6x6	1892	1,81	14,8	24,8	5,72	-	-	96,0	1,79
LL 1622	CFLL1622	25,400	2x2	2532	3,06	20,2	15,5	8,27	44,0	25,0	72,0	1,42
LL 1644	CFLL1644	25,400	4x4	2532	3,06	20,2	28,1	8,27	44,0	25,0	144,0	2,79
LL 1666	CFLL1666	25,400	6x6	2532	3,06	20,2	40,5	8,27	44,0	25,0	216,0	4,15
LL 2022	CFLL2022	31,750	2x2	3157	3,56	25,3	18,2	10,17	-	-	95,0	2,03
LL 2044	CFLL2044	31,750	4x4	3157	3,56	25,3	33,4	10,17	-	-	190,0	4,00
LL 2066	CFLL2066	31,750	6x6	3157	3,56	25,3	47,9	10,17	-	-	285,0	5,96
LL 2422	CFLL2422	38,100	2x2	3797	5,08	30,7	25,4	14,63	56,0	32,0	170,0	3,60
LL 2444	CFLL2444	38,100	4x4	3797	5,08	30,7	46,8	14,63	56,0	32,0	170,0	7,07
LL 2466	CFLL2466	38,100	6x6	3797	5,08	30,7	68,2	14,63	56,0	32,0	170,0	10,53

Other sizes available on request. Other final plates are available on request. In case of equal breaking load for different configurations, this one refers to the minimum ISO value.



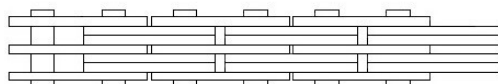
2x2



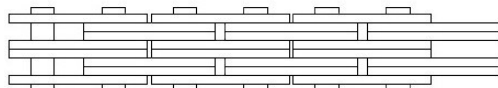
2x3



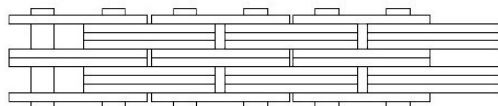
3x4



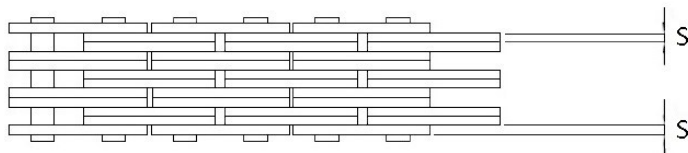
4x4



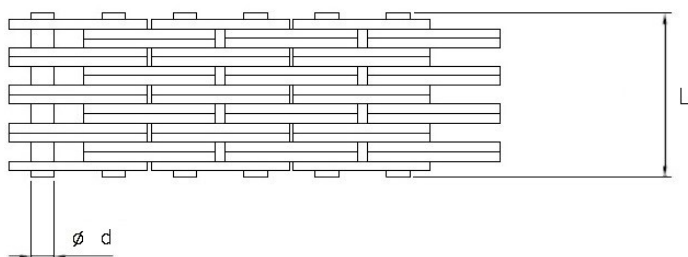
4x6

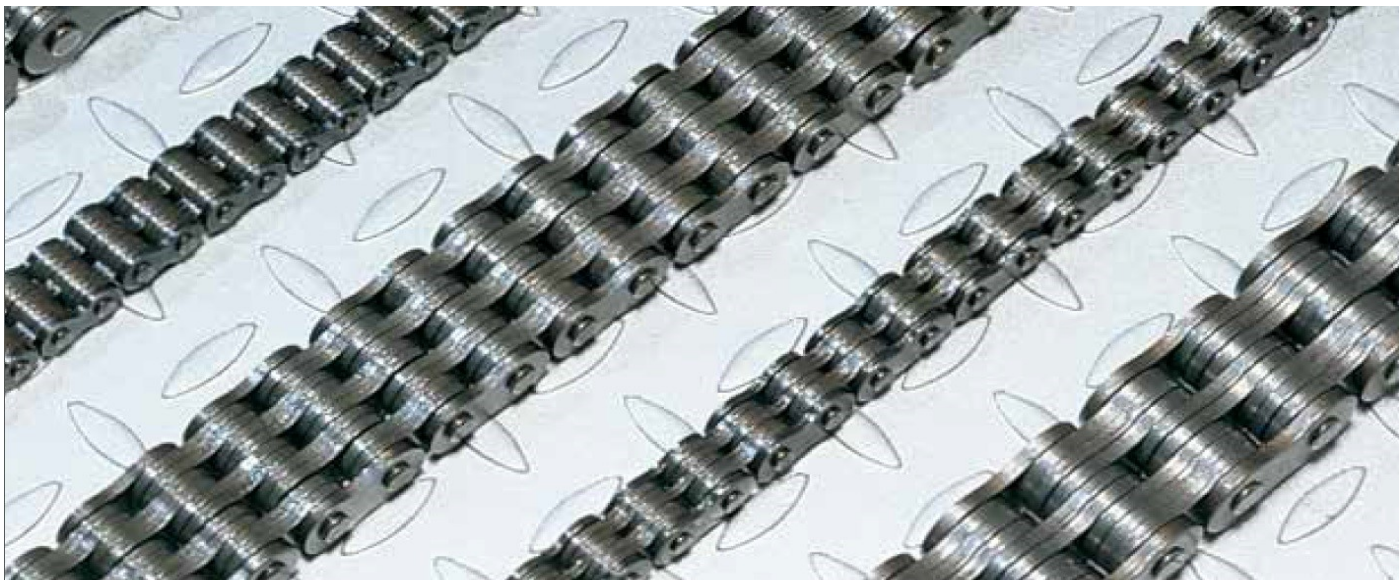


6x6



8x8

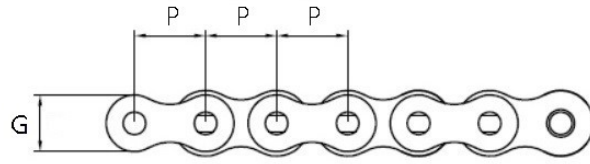




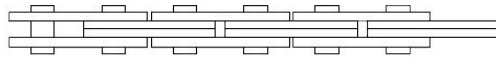
Chain Ref.	Technical Details									
------------	-------------------	--	--	--	--	--	--	--	--	--

Ref. ANSI N°	AS Nord code	Pitch [mm]	Plate combination NOM	Chain lenght over 100 pitches [mm] (+/- 0,25%)	Plate width [mm] MAX	Plate height [mm] MAX	Size	Ø Pin diam. [mm] MAX	ISO606 Tensile strenght [kN]	Weight [kg/m]
AL Series										
		P			S	G	L	d	FB	q
AL 422	CFAL422	12,700	2x2	1257	1,55	9,7	8,0	3,97	17,0	0,35
AL 444	CFAL444	12,700	4x4	1257	1,55	9,7	14,8	3,97	34,0	0,68
AL 466	CFAL466	12,700	6x6	1257	1,55	9,7	21,1	3,97	51,0	1,01
AL 522	CFAL522	15,875	2x2	1578	2,06	12,8	10,5	5,08	30,5	0,65
AL 544	CFAL544	15,875	4x4	1578	2,06	12,8	18,8	5,08	58,0	1,20
AL 566	CFAL566	15,875	6x6	1578	2,06	12,8	27,2	5,08	90,0	1,79
AL 622	CFAL622	19,050	2x2	1893	2,45	15,3	12,6	5,95	40,0	0,88
AL 644	CFAL644	19,050	4x4	1893	2,45	15,3	22,4	5,95	80,0	1,73
AL 666	CFAL666	19,050	6x6	1893	2,45	15,3	32,5	5,95	120,0	2,57
AL 822	CFAL822	25,400	2x2	2525	3,06	20,2	15,6	7,93	70,0	1,45
AL 844	CFAL844	25,400	4x4	2525	3,06	20,2	28,2	7,93	145,0	2,84
AL 866	CFAL866	25,400	6x6	2525	3,06	20,2	40,8	7,93	200,0	4,24
AL 1022	CFAL1022	31,750	2x2	3165	4,02	25,3	20,4	9,53	112,0	2,46
AL 1044	CFAL1044	31,750	4x4	3165	4,02	25,3	36,7	9,53	200,0	4,68
AL 1066	CFAL1066	31,750	6x6	3165	4,02	25,3	53,2	9,53	300,0	6,99
AL 1222	CFAL1222	38,100	2x2	3808	4,88	30,7	24,3	11,10	152,3	3,32
AL 1244	CFAL1244	38,100	4x4	3808	4,88	30,7	43,4	11,10	245,0	6,65
AL 1266	CFAL1266	38,100	6x6	3808	4,88	30,7	63,5	11,10	368,0	9,94
AL 1444	CFAL1444	44,450	4x4	4419	5,65	36,3	51,0	12,71	372,0	10,00
AL 1466	CFAL1466	44,450	6x6	4419	5,65	36,3	74,1	12,71	558,0	14,60
AL 1644	CFAL1644	50,800	4x4	5050	6,45	41,4	58,2	14,29	470,0	12,70
AL 1666	CFAL1666	50,800	6x6	5050	6,45	41,4	84,4	14,29	706,0	19,60

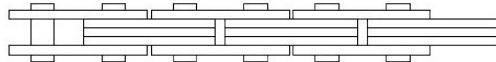
Other sizes available on request. In case of equal breaking load for different configurations, this one refers to the minimum ISO value.



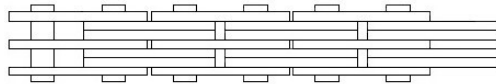
2x2



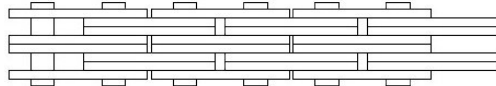
2x3



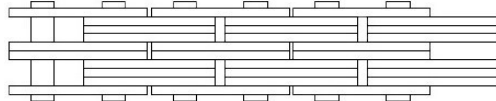
3x4



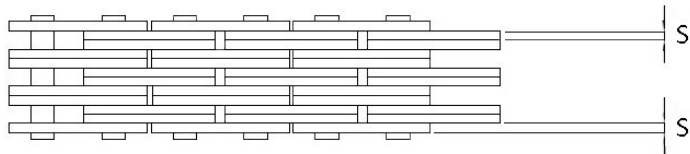
4x4



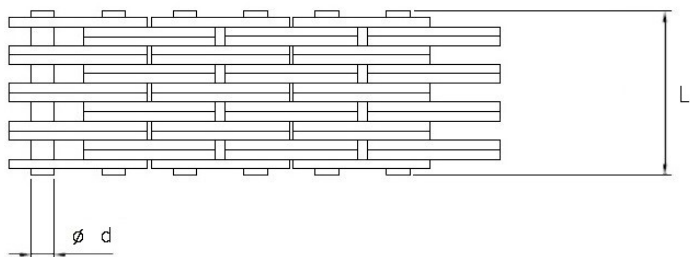
4x6



6x6



8x8



Ref. ANSI / ISO N°	AS Nord code	Pitch [mm]	Plate combination NOM	Chain lenght over 100 pitches [mm] (+/- 0,25%)	Plate width [mm] MAX	Plate height [mm] MAX	Size	Ø Pin diam. [mm] MAX	ISO606 Tensile strenght [kN]	Weight [kg/m]
--------------------	--------------	---------------	--------------------------	------------------------------------------------------------	----------------------------	-----------------------------	------	----------------------------	---------------------------------------	------------------

LH (BL) Series

ANSI	ISO		P			S	G	L	d	FB	q
BL 422	LH 0822	CFBL422	12,700	2x2	1270	2,06	12,1	10,9	5,08	27,8	0,60
BL 423	LH 0823	CFB423	12,700	2x3	1270	2,06	12,1	13,0	5,08	27,8	0,75
BL 434	LH 0834	CFBL434	12,700	3x4	1270	2,06	12,1	17,2	5,08	42,5	1,40
BL 444	LH 0844	CFBL444	12,700	4x4	1270	2,06	12,1	19,3	5,08	58,0	1,20
BL 446	LH 0846	CFBL446	12,700	4x6	1270	2,06	12,1	23,5	5,08	58,0	1,46
BL 466	LH 0866	CFBL466	12,700	6x6	1270	2,06	12,1	27,8	5,08	90,0	1,74
BL 488	LH 0888	CFBL488	12,700	8x8	1270	2,06	12,1	36,3	5,08	110,0	2,56
BL 523	LH 1023	CFBL523	15.875	2x3	1587	2,46	15,1	15,0	5,95	40,1	1,05
BL 534	LH 1034	CFBL534	15.875	3x4	1587	2,46	15,1	19,9	5,95	60,0	1,47
BL 544	LH 1044	CFBL544	15.875	4x4	1587	2,46	15,1	22,4	5,95	78,0	1,69
BL 546	LH 1046	CFBL546	15.875	4x6	1587	2,46	15,1	27,3	5,95	78,0	2,07
BL 566	LH 1066	CFBL566	15.875	6x6	1587	2,46	15,1	32,3	5,95	120,0	2,67
BL 588	LH 1088	CFBL588	15.875	8x8	1587	2,46	15,1	42,2	5,95	140,0	3,70
BL 623	LH 1223	CFBL623	19,050	2x3	1905	3,23	18,2	20,0	7,93	60,0	1,84
BL 634	LH 1234	CFBL634	19,050	3x4	1905	3,23	18,2	26,3	7,93	101,5	2,58
BL 644	LH 1244	CFBL644	19,050	4x4	1905	3,23	18,2	29,6	7,93	126,0	2,95
BL 646	LH 1246	CFBL646	19,050	4x6	1905	3,23	18,2	36,5	7,93	126,0	3,70
BL 666	LH 1266	CFBL666	19,050	6x6	1905	3,23	18,2	43,0	7,93	190,0	4,30
BL 688	LH 1288	CFBL688	19,050	8x8	1905	3,23	18,2	56,4	7,93	245,0	6,00
BL 822	LH 1622	CFBL822	25,400	2x2	2540	4,06	23,9	20,1	9,53	93,0	2,40
BL 823	LH 1623	CFBL823	25,400	2x3	2540	4,06	23,9	24,2	9,53	100,0	2,55
BL 834	LH 1634	CFBL834	25,400	3x4	2540	4,06	23,9	32,6	9,53	152,0	3,56
BL 844	LH 1644	CFBL844	25,400	4x4	2540	4,06	23,9	36,7	9,53	186,0	4,10
BL 846	LH 1646	CFBL846	25,400	4x6	2540	4,06	23,9	45,0	9,53	186,0	5,10
BL 866	LH 1666	CFBL866	25,400	6x6	2540	4,06	23,9	53,2	9,53	285,0	6,20
BL 888	LH 1688	CFBL888	25,400	8x8	2540	4,06	23,9	69,8	9,53	338,0	9,40
BL 1022	LH 2022	CFBL1022	31,750	2x2	3175	4,88	29,6	23,8	11,10	118,0	3,60
BL 1023	LH 2023	CFBL1023	31,750	2x3	3175	4,88	29,6	28,7	11,10	142,0	4,25
BL 1034	LH 2034	CFBL1034	31,750	3x4	3175	4,88	29,6	38,6	11,10	244,0	6,01
BL 1044	LH 2044	CFBL1044	31,750	4x4	3175	4,88	29,6	43,6	11,10	284,0	6,80
BL 1046	LH 2046	CFBL1046	31,750	4x6	3175	4,88	29,6	53,5	11,10	305,5	8,40
BL 1066	LH 2066	CFBL1066	31,750	6x6	3175	4,88	29,6	63,4	11,10	417,0	10,20
BL 1088	LH 2088	CFBL1088	31,750	8x8	3175	4,88	29,6	83,2	11,10	462,0	14,00
BL 1234	LH 2434	CFBL1234	38,100	3x4	3810	5,68	35,9	45,1	12,71	245,0	8,70
BL 1246	LH 2446	CFBL1246	38,100	4x6	3810	5,68	35,9	62,5	12,71	371,0	12,40
BL 1266	LH 2466	CFBL1266	38,100	6x6	3810	5,68	35,9	74,2	12,71	454,0	14,80
BL 1288	LH 2488	CFBL1288	38,100	8x8	3810	5,68	35,9	97,4	12,71	605,0	21,00
BL 1434	LH 2834	CFBL1434	44,450	3x4	4445	6,38	41,9	51,2	14,28	316,0	11,00
BL 1446	LH 2846	CFBL1446	44,450	4x6	4445	6,38	41,9	71,0	14,28	427,5	15,20
BL 1634	LH 3234	CFBL1634	50,800	3x4	5080	7,18	47,8	58,5	17,46	530,0	14,00
BL 1644	LH 3244	CFBL1644	50,800	4x4	5080	7,18	47,8	66,0	17,46	579,0	17,40
BL 1646	LH 3246	CFBL1646	50,800	4x6	5080	7,18	47,8	81,0	17,46	579,0	21,60
BL 1666	LH 3266	CFBL1666	50,800	6x6	5080	7,18	47,8	96,0	17,46	868,0	25,90
BL 1688	LH 3288	CFBL1688	50,800	8x8	5080	7,18	47,8	125,0	17,46	1157,0	34,50

Other sizes available on request. In case of equal breaking load for different configurations, this one refers to the minimum ISO value.